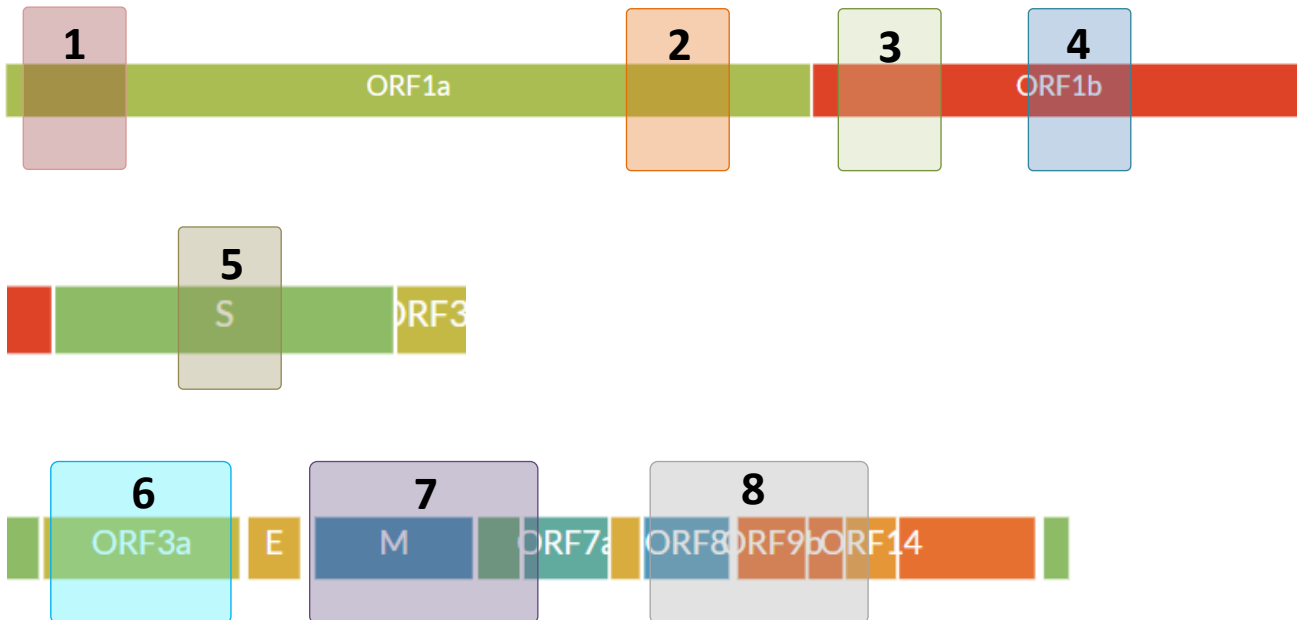




DEEPCHEK® 8-PLEX SARS-CoV-2 GENOTYPING ASSAY (RUO)

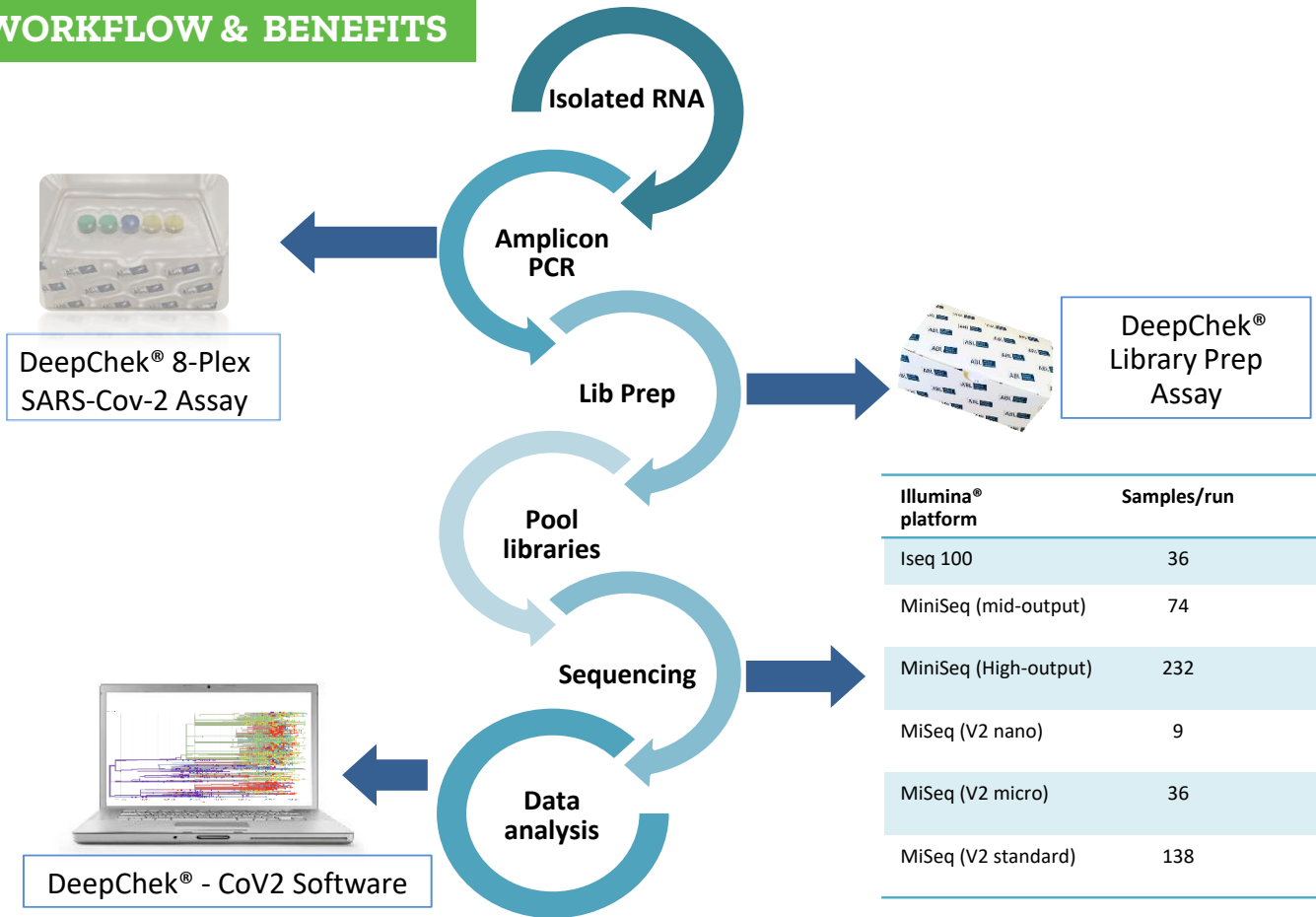


- Next Generation Sequencing Assay
- The DeepChek® 8-plex Cov-2 genotyping assay covers the whole or partial regions from the following genes:
 - ORF1a & ORF1b-gene
 - S-gene
 - ORF3a-gene
 - M-gene
 - ORF6 & ORF7a-gene
 - ORF8 & ORF9b-gene
 - ORF14-gene
- Constantly up-to date reference sequences databases (NCBI - 415 whole genome sequences over the world...)



For Research Use Only (RUO). Not for use in diagnostic procedures.

WORKFLOW & BENEFITS

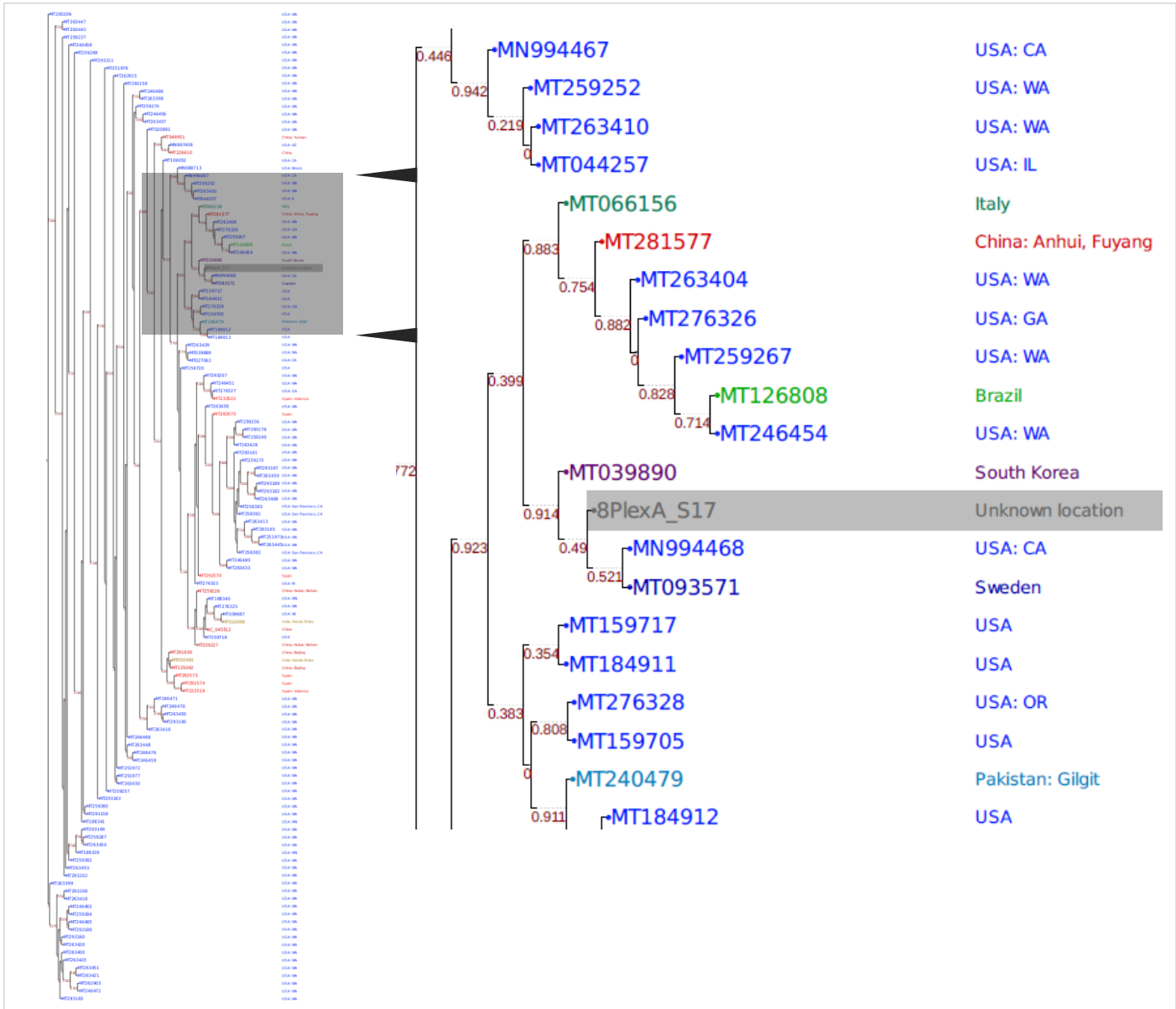


DeepChek® - CoV2 Software

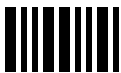
Parameter	Specification
Standardized workflow	NGS-based TAT: 2/3 days / Limited hands-on-time
Enrichment method	Multiplex PCR
Design panel	From reference sequence NC-045512.2 (MN908947)
8 plex in a single tube	Targeting High diversity regions (genomic variations)
Applications	For Research Use Only <ul style="list-style-type: none"> ✓ Screening ✓ Monitoring ✓ Quasispecies identification ✓ Coronavirus (2019-nCoV) Genotyping ✓ Epidemiological studies
Library prep ABL	Indexes included for 24 / 48 / 96 samples per run
Interpretation	Constantly up-to-date & secured Web Software with several knowledge databases for analysis & clinical interpretation

For Research Use Only (RUO). Not for use in diagnostic procedures.

An up-to-date software for data analysis



References



DeepChek® 8-plex CoV-2 Genotyping Assay– 50 tests	K-20-CV19-NGS
DeepChek® NGS LIBRARY PREPARATION V1	K-17-NGS-LP1
DeepChek® - CoV2 Software	S-12-023 (CVL)
DeepChek® - CoV2 Module	S-12-023 (CVM)

For Research Use Only (RUO). Not for use in diagnostic procedures.